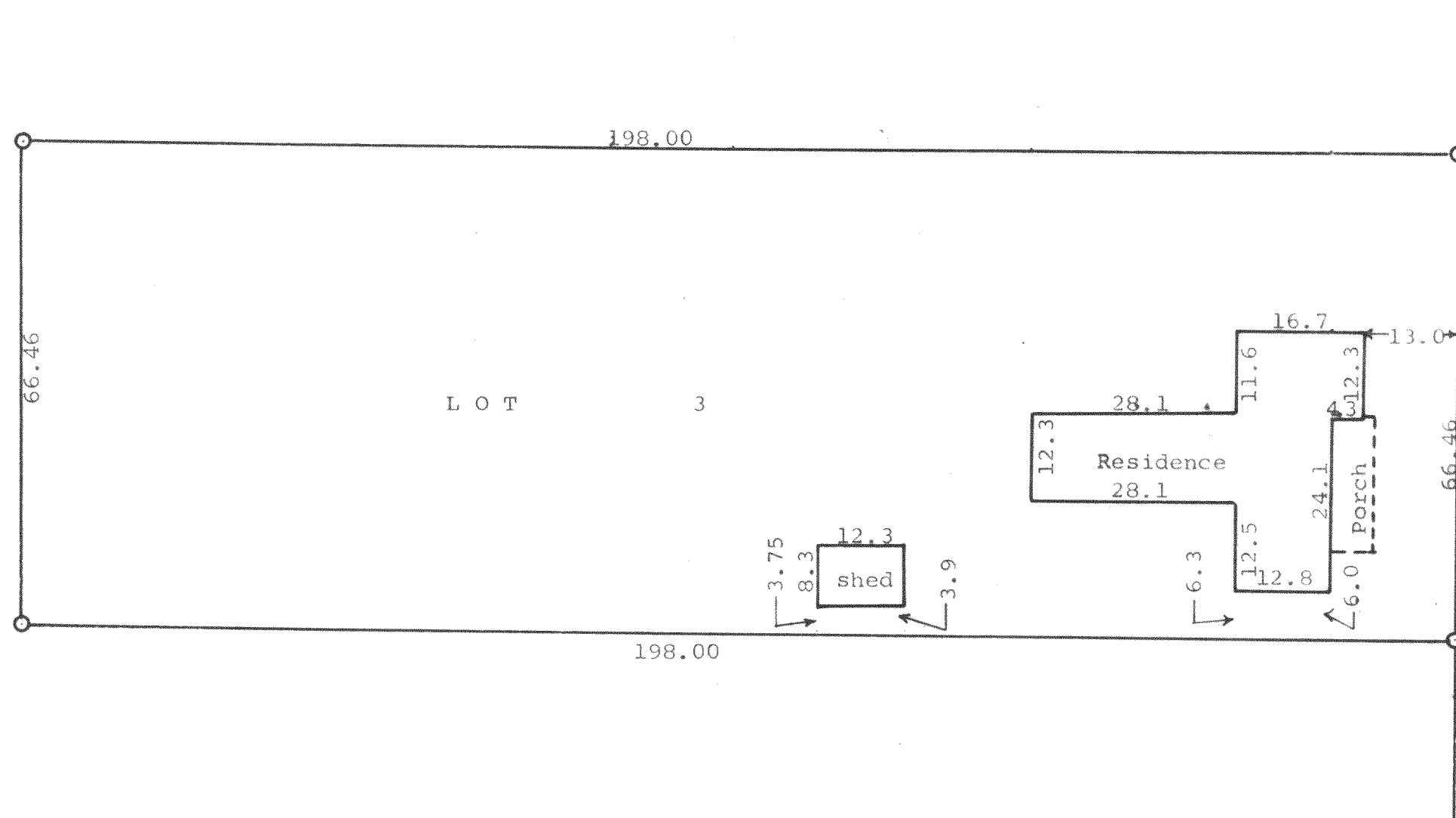


GEORGE T. DUNHAM
SURVEYING & SUBDIVIDING
DELAVER, WISCONSIN



Scale - 1" = 20'
● = Iron Pipe



TERRACE

STREET

STATE OF WISCONSIN) SS
WALWORTH COUNTY)

I, George T. Dunham, Surveyor, do certify that I have surveyed the property described as follows,

Lot 3, Block 6 of the Original Plat of the City of Delavan, Walworth County, Wisconsin.

and the above plat is an accurate survey and a true representation thereof and correctly shows the exterior boundary lines and location of buildings and the correct measurements thereof.

November 5, 1964

George T. Dunham
George T. Dunham, Surveyor